



# Potential Tropical Cyclone Three

National Weather Service Houston/Galveston

## LATEST INFORMATION

### COORDINATES

Latitude 25.9 °N

Longitude 90.5 °W

### LOCATION

355 miles from Galveston, TX

### MOVEMENT

NW 10 mph

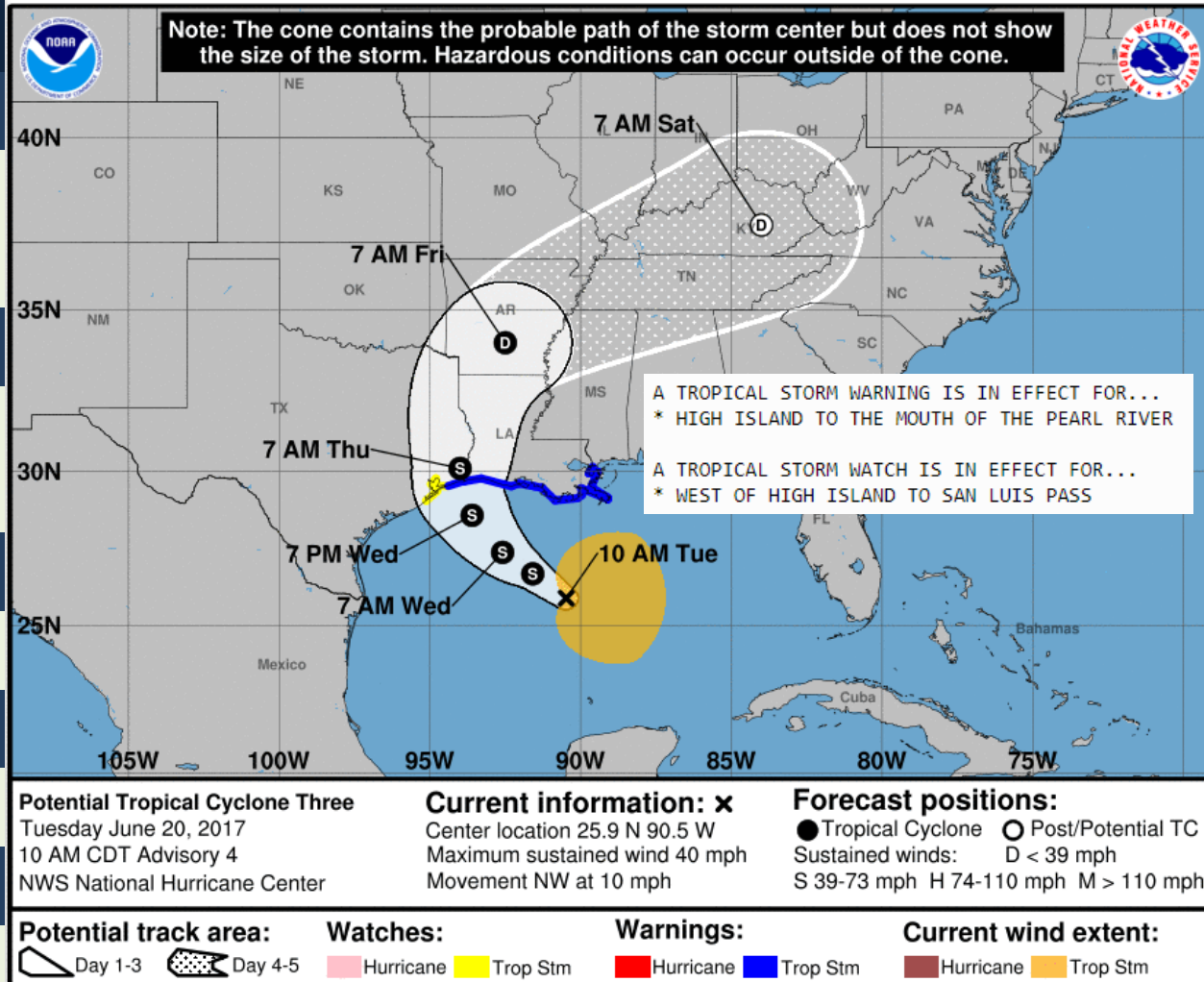
### MAX SUSTAINED WINDS

40 mph

### PRESSURE

999 mb

29.50 inches



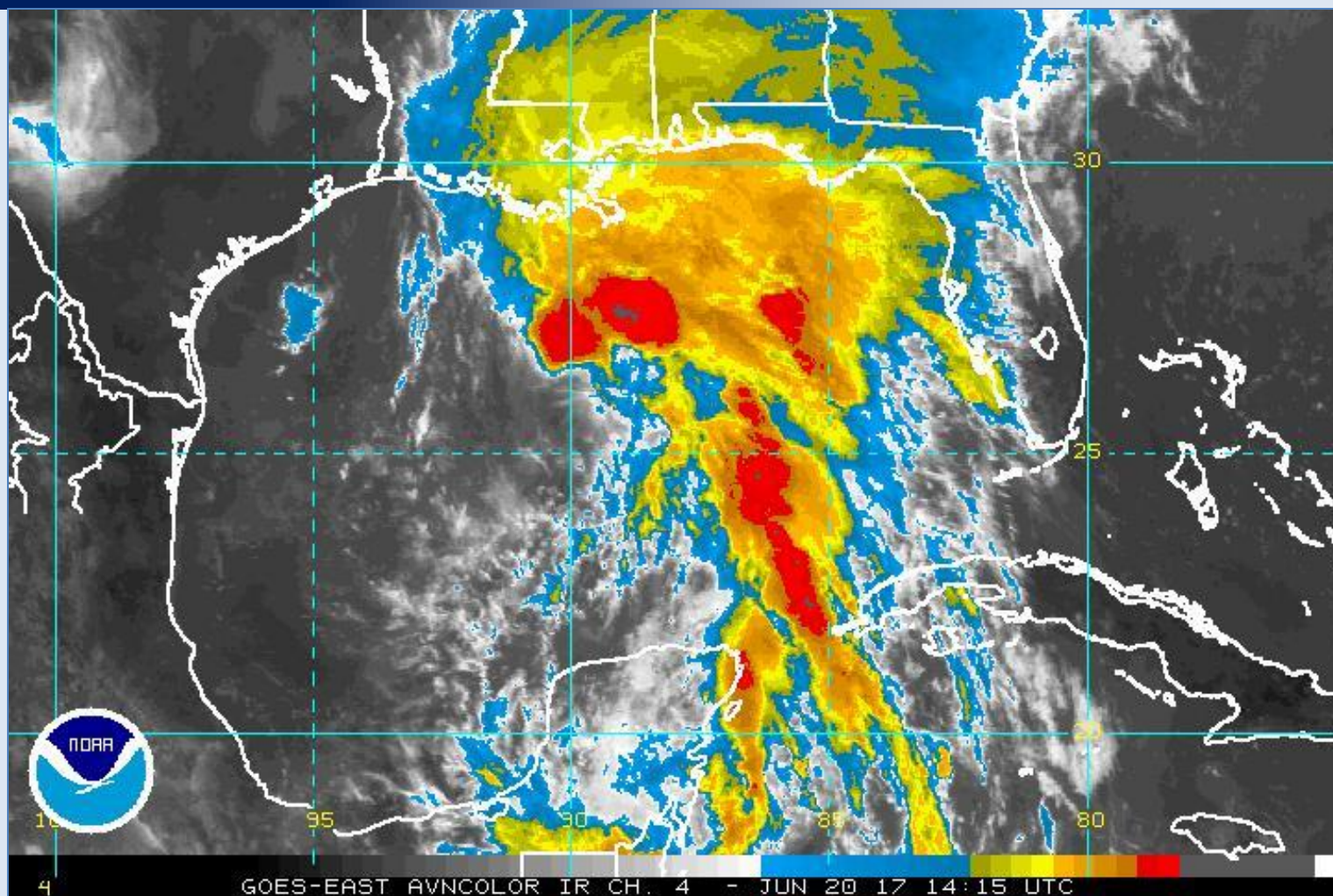
@NWShouston  
weather.gov/houston

Image 6/20/2017  
Created 10:10 AM



# Potential Tropical Cyclone Three

*National Weather Service Houston/Galveston*



☐ This is the latest satellite picture



@NWSHouston  
[weather.gov/houston](http://weather.gov/houston)

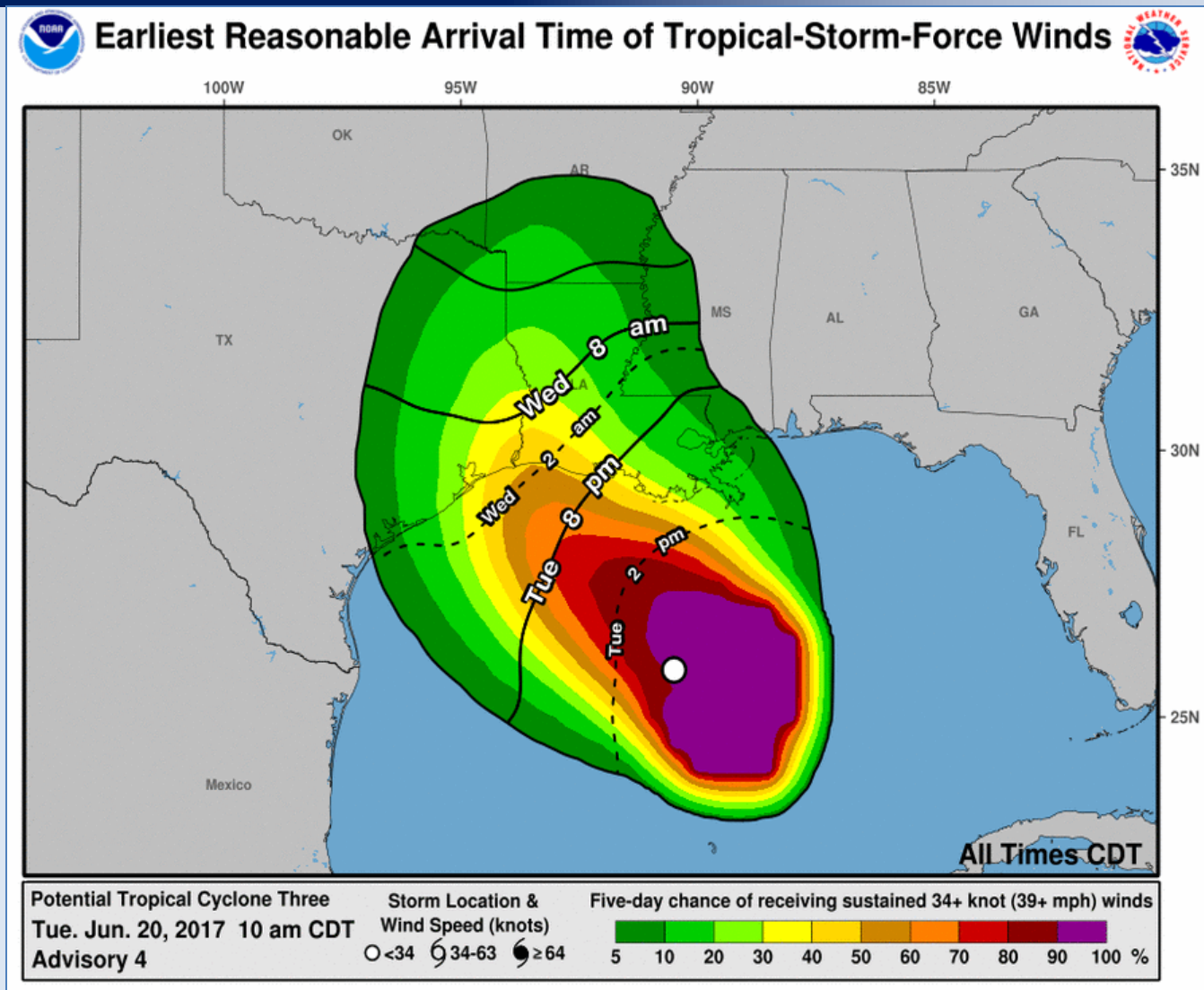
**Image** 6/20/2017  
**Created** 10:10 AM





# Potential Tropical Cyclone Three

National Weather Service Houston/Galveston



- ☐ This is the time before which there is no more than a 10% chance of seeing the onset of sustained tropical-storm-force winds.
- ☐ This is the period during which preparations should ideally be completed for those with a low tolerance for risk.



@NWSHouston  
[weather.gov/houston](http://weather.gov/houston)

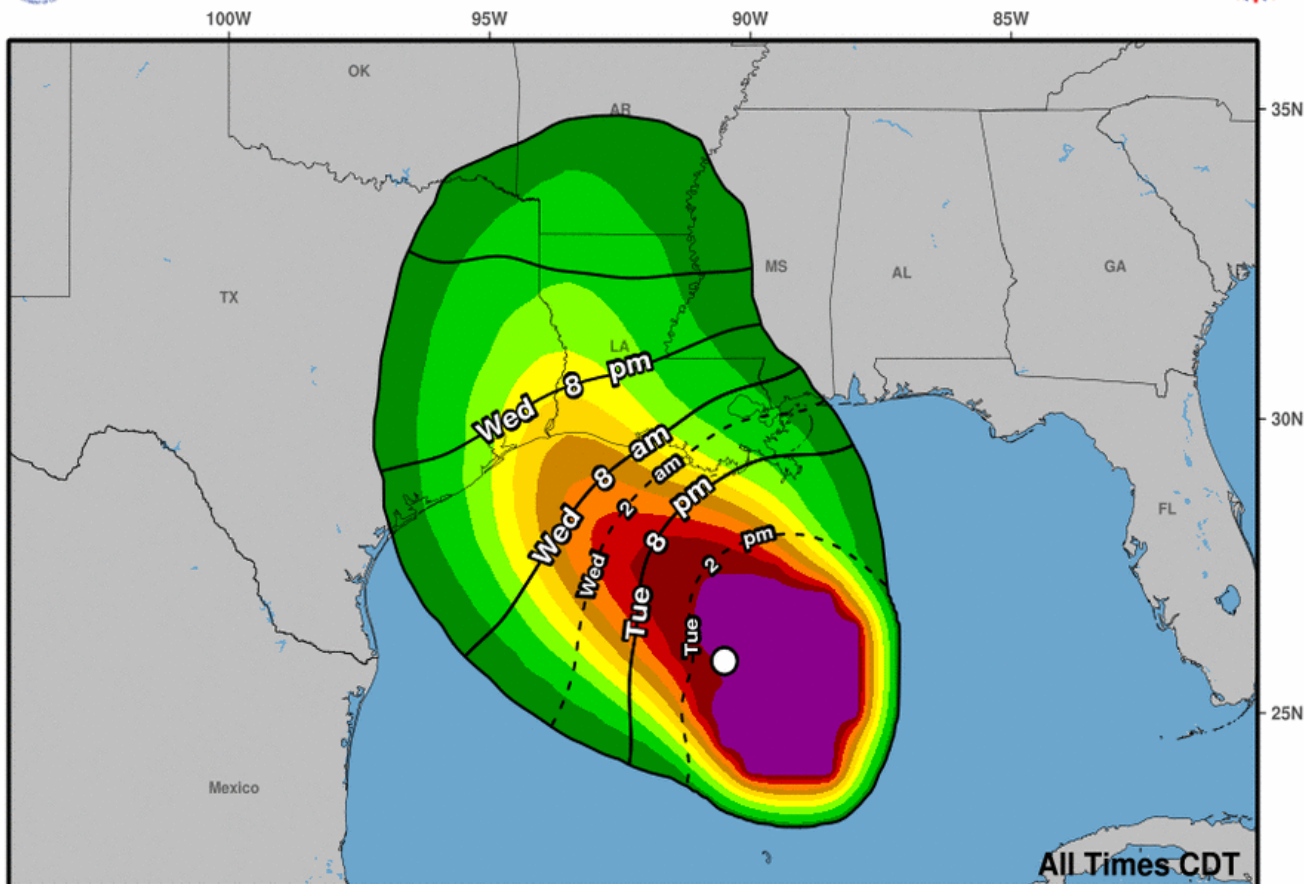
Image 6/20/2017  
Created 10:10 AM



# Potential Tropical Cyclone Three

National Weather Service Houston/Galveston

## Most Likely Arrival Time of Tropical-Storm-Force Winds

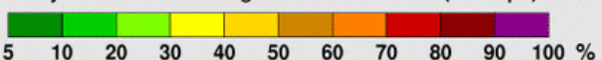


Potential Tropical Cyclone Three  
Tue. Jun. 20, 2017 10 am CDT  
Advisory 4

Storm Location &  
Wind Speed (knots)

○ <34    ◐ 34-63    ● ≥64

Five-day chance of receiving sustained 34+ knot (39+ mph) winds



- ☐ This graphic that identifies the time before or after which the onset of tropical-storm-force winds is equally likely.
- ☐ This graphic would be more appropriate for users who are willing to risk not having completed all their preparations before the storm arrives.



@NWSHouston  
[weather.gov/houston](http://weather.gov/houston)

Image 6/20/2017  
Created 10:10 AM

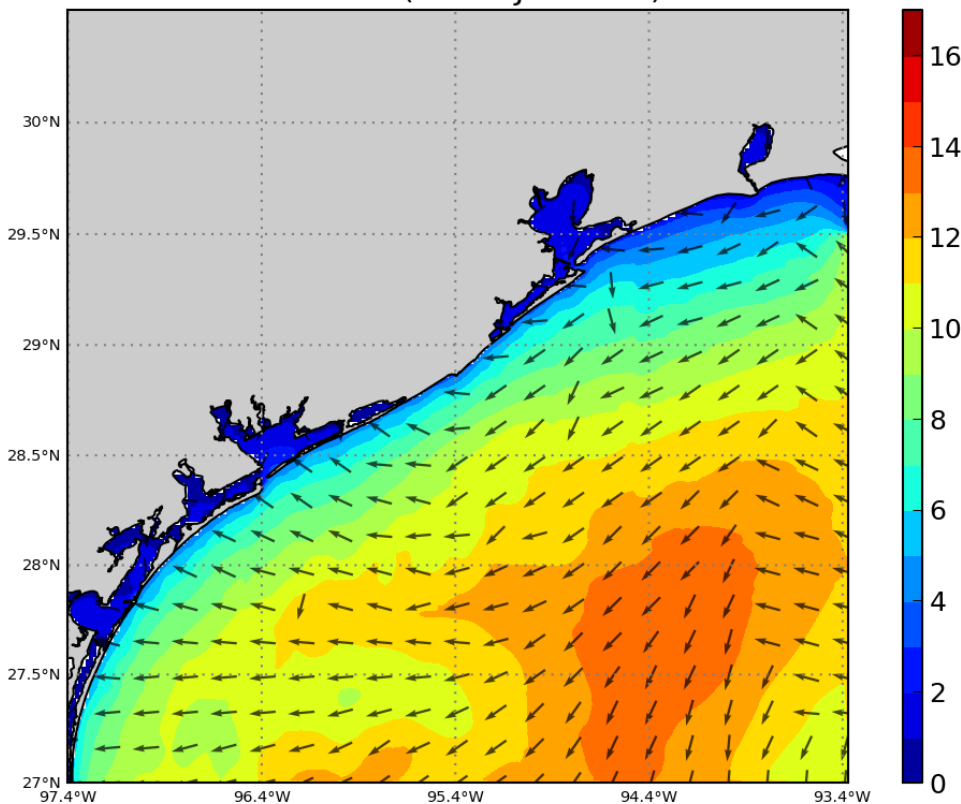


# Potential Tropical Cyclone Three

National Weather Service Houston/Galveston



NWPS Significant Wave Height (ft) and Peak Wave Direction  
Hour 33 (15Z21JUN2017)



## Seas

- ☐ Increasing to  $\geq 7$  feet within 20 NM by **Wednesday morning**



@NWShouston  
[weather.gov/houston](http://weather.gov/houston)

Image 6/20/2017  
Created 10:10 AM



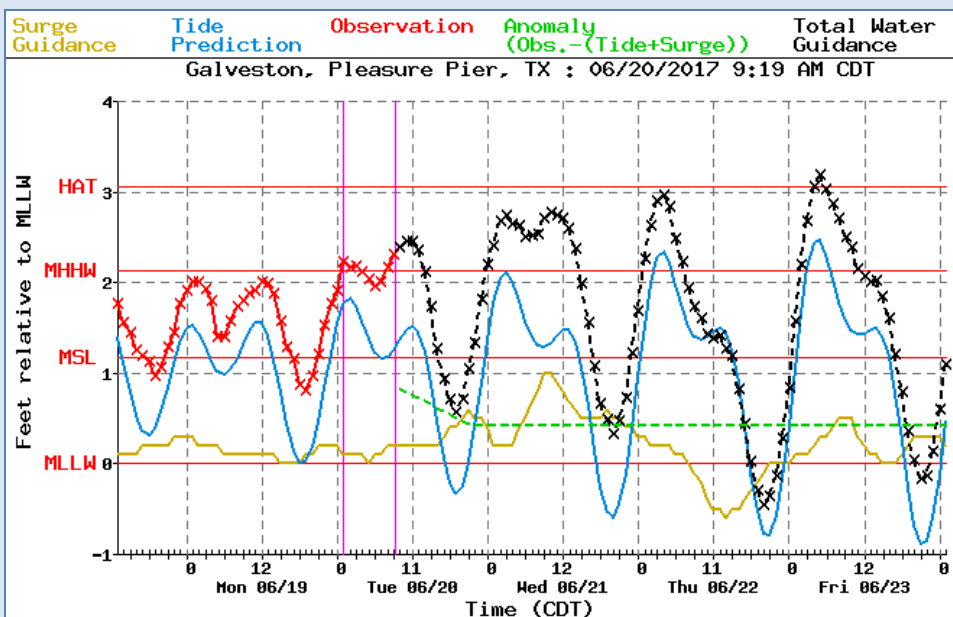
# Potential Tropical Cyclone Three

National Weather Service Houston/Galveston

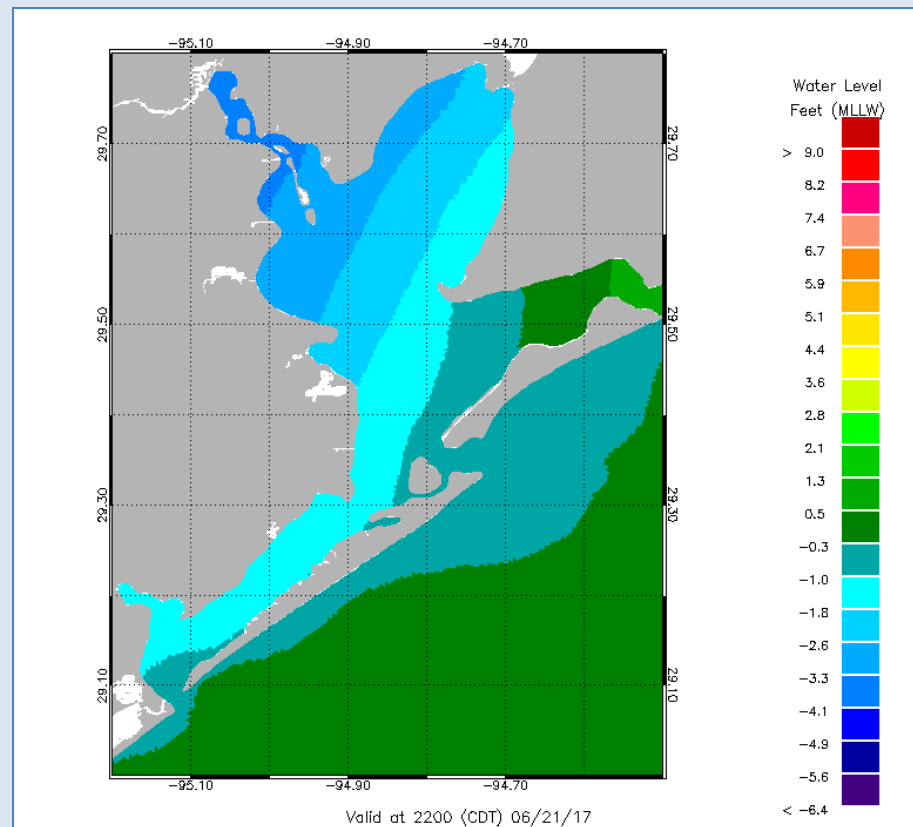
## Surge & Tides

☐ **HIGHLY UNCERTAIN!**

☐ Dependent on whether we end up on the east or west side of the disturbance.



**West side:** coastal flooding. (total observed ~4-5 feet). Earliest onset Wednesday afternoon around high tide. Levels will be higher than depicted on this graph!



**East side:** water possibly blown out of bays.



@NWSHouston  
weather.gov/houston

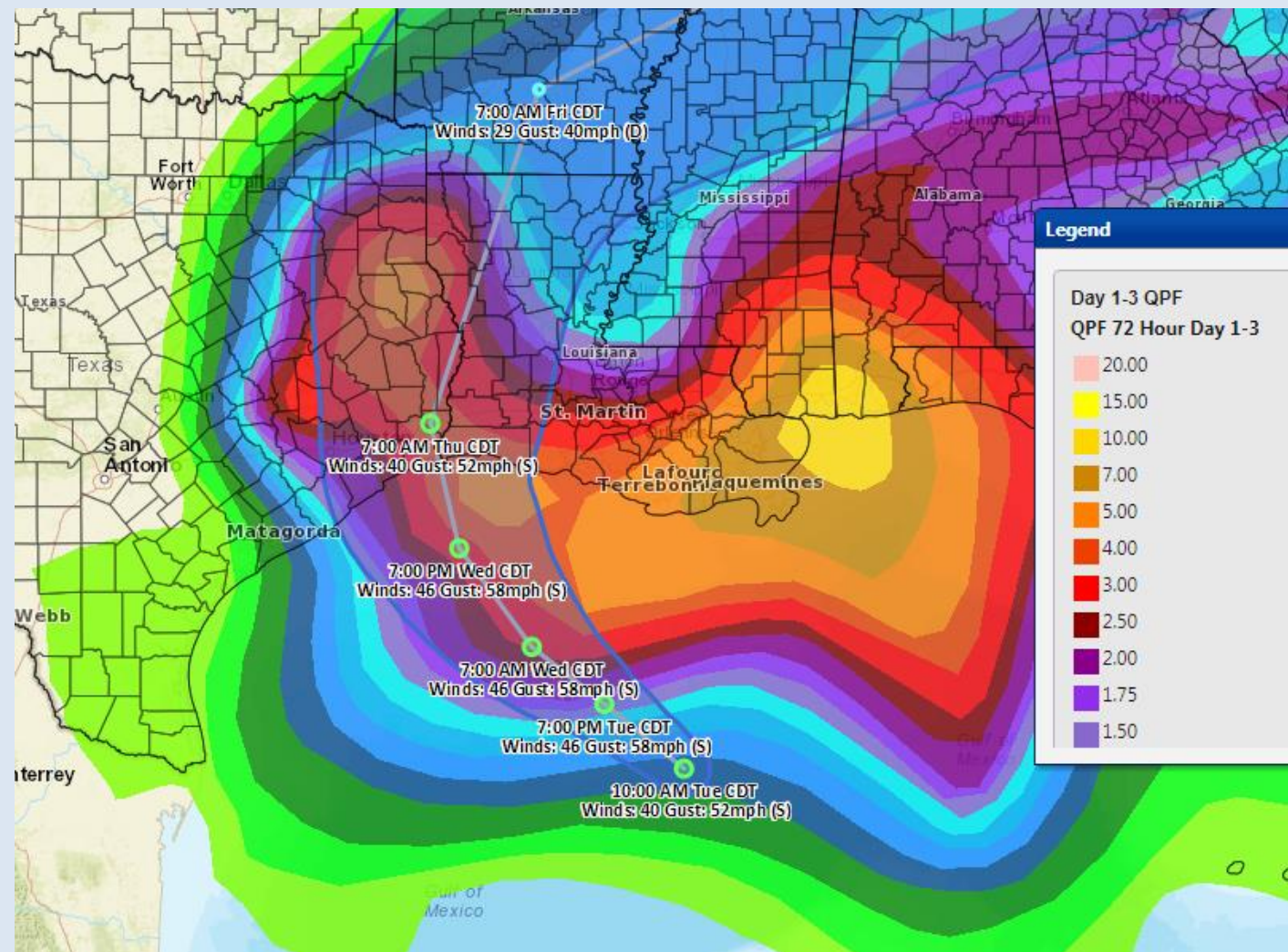
Image 6/20/2017  
Created 10:10 AM





# Potential Tropical Cyclone Three

National Weather Service Houston/Galveston



## Rainfall through Friday morning

- ☐ Highest rainfall generally along and east of the track, and will shift accordingly.
- ☐ Note: this was the 7am track. It has shifted west a bit. See the 1<sup>st</sup> slide for latest track.



@NWSHouston  
weather.gov/houston

Image 6/20/2017  
Created 10:10 AM